



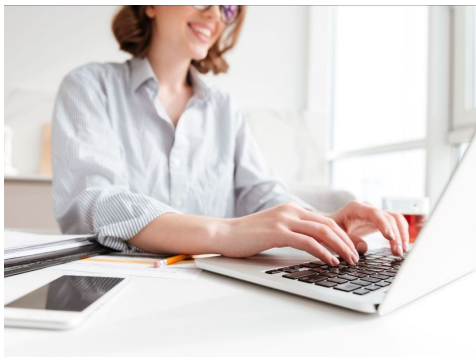
## ENERGY SAVINGS ASSISTANCE **COMMON AREA MEASURES**



### **First Construction Deadline: December 31, 2020**

The construction deadline for the first wave of Energy Savings Assistance: Common Area Measures (ESA CAM) projects is quickly approaching at the end of this year. Projects with incentive reservations dated on or before March 1, 2020 must complete construction by December 31, 2020, or by the construction deadline in their Project Approval Letter, whichever comes first.

If you have any questions about your project's construction deadline, please contact your case manager. You can also reach out to our program staff at 866-352-7457 or [multifamilySPOC@trccompanies.com](mailto:multifamilySPOC@trccompanies.com).



### **Construction Completion to Payment**

After your project completes construction, verification is the final step before incentive payment. Verification is a key step to make sure your project completed the approved scope of work in compliance with ESA CAM Policies and Procedures.

> [View our three tips to make sure the verification process goes as smoothly as possible.](#)

### **New Resource: Post Benchmarking Guide**

Did you know every ESA CAM property receives an energy benchmarking report as part of

a statewide benchmarking requirement? We use the PG&E Benchmarking Portal and ENERGY STAR Portfolio Manager to collect and analyze energy data.

Each report provides energy consumption, cost, and greenhouse gas emission information, plus actionable goals for reducing energy use and managing monthly energy spikes. Combined with making energy efficiency upgrades, using these benchmarking tools can reduce your property's overall energy use.

Check out our new Post-Benchmarking Guide to learn how to maintain your PG&E Benchmarking Portal and ENERGY STAR Portfolio Manager accounts.

[> View the Post-Benchmarking Guide](#)

---

## **COVID-19: Construction Job Safety Oversight Requirements**

PG&E recently issued guidance to ensure contractors conduct construction activities in compliance with local health orders. ESA CAM shared this information in a recent email for our participants to reference.

[> Learn more](#)

---

ESA CAM provides no-cost energy efficiency upgrades and technical assistance to affordable, deed-restricted multifamily properties. Common areas can include hallways, leasing offices, lobbies, stairwells, elevators, laundry rooms, community rooms, dining areas, site parking/garages, and outdoor spaces. Common areas also include central building systems such as boilers, central natural gas furnaces, or central water heating. Funding is available on a first-come, first-served basis.

---

 [Email us or call at 866-352-7457](#)

 [Visit our website](#)

---

*Copyright © 2020 TRC Energy Services, All rights reserved.*

Want to change how you receive these emails?  
You can [update your preferences](#) or [unsubscribe from this list](#).