



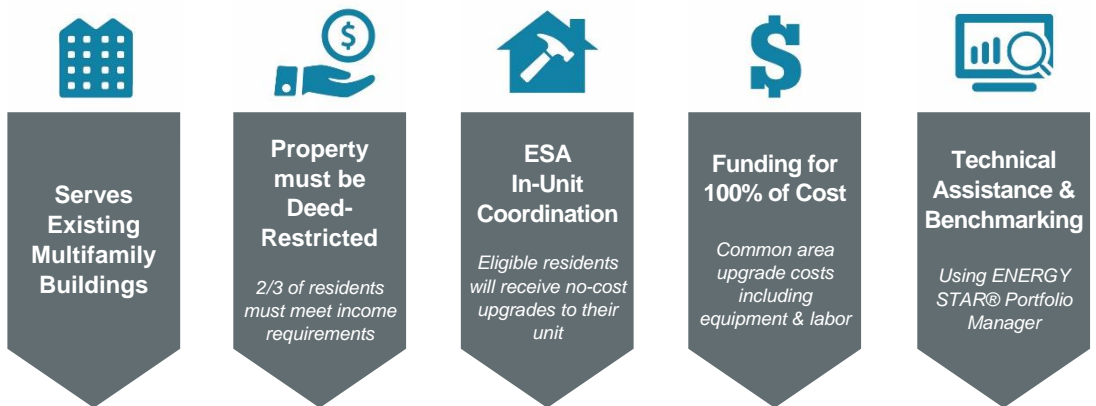
# Multifamily Owner Services

## Energy Savings Assistance Common Area Measures

### Overview

Energy Savings Assistance: Common Area Measures (ESA CAM) is a limited-time program that promotes and facilitates energy retrofits of the common areas and central systems in multifamily properties through technical assistance, cash incentives, and program coordination. Applicable energy upgrades must be completed according to the project's approved project timeline or by October 1, 2020, whichever comes first.

*Funding is available on a first-come, first-served basis.*



### Eligible Upgrades

Eligible properties can select upgrades from the categories below. The property must receive utility service from Pacific Gas & Electric (PG&E).



Interested? [www.esacommonarea.com](http://www.esacommonarea.com) [multifamilySPOC@TRCcompanies.com](mailto:multifamilySPOC@TRCcompanies.com) [1-866-352-7457](tel:1-866-352-7457)

This program shall at all times be subject to change or termination without prior notice. This program is funded by California utility customers and administered by Pacific Gas and Electric Company under the auspices of the California Public Utility Commission. "PG&E" refers to Pacific Gas and Electric Company, a subsidiary of PG&E Corporation." ©2019 Pacific Gas and Electric Company. All rights reserved.