



ENERGY SAVINGS ASSISTANCE COMMON AREA MEASURES

ESA CAM Program Updates

June 25, 2020

Presenters

Genevieve Resnick, TRC
ESA CAM Pipeline Manager

Matt Jones, TRC
ESA CAM Technical Lead





Using *GoToWebinar*

Open and close
your **control panel**

File View Help

+ Attendee List (2 | Max 1001)

- Audio

Audio Mode: Use Telephone
 Use Mic & Speakers

Dial: 773-945-1010
Access Code: 407-254-450
Audio PIN: 97
If you're already on the call, press #97#
now.

+ Questions

Practice Webinar
Webinar ID: 239-044-248

GoToWebinar™

Choose **audio mode**

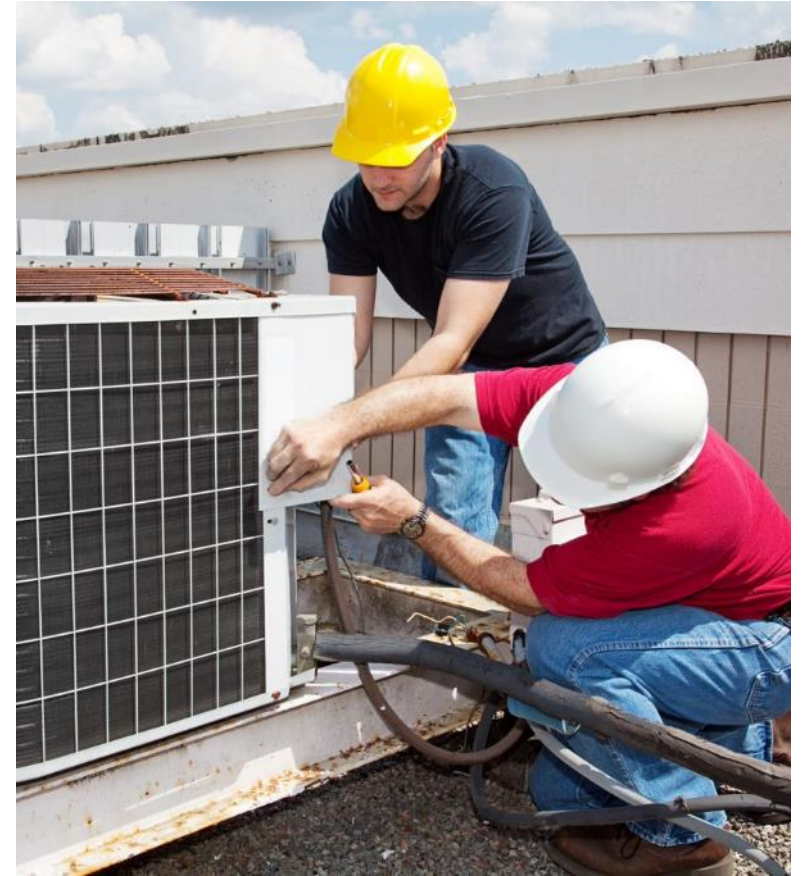
Type **questions** in
the chat box

Questions will be taken at the end of the presentation.



Agenda

- COVID-19 Health and Safety
- Program Timeline
- Phased Payment Policy
- Change Order Policy
- Virtual Audits and Inspections
- COVID-19 Resources
- Questions and Answers





*Pacific Gas and
Electric Company*[®]

This offering is funded by California utility customers and administered by PG&E under the auspices of the California Public Utilities Commission.

“PG&E” refers to Pacific Gas and Electric Company, a subsidiary of PG&E Corporation.

© 2020 Pacific Gas and Electric Company. All rights reserved.



ESA CAM Website

Visit www.esacommonarea.com for resources, program updates, and more.

ENERGY SAVINGS ASSISTANCE
COMMON AREA MEASURES

HOME • HOW TO PARTICIPATE • GET STARTED • **RESOURCES** • **NEWS**

ENERGY SAVINGS ASSISTANCE: COMMON AREA MEASURES

Upgrade your affordable multifamily property's common areas and central systems at no cost. Participate in Pacific Gas and Electric Company's (PG&E) Energy Savings Assistance: Common Area Measures (ESA CAM) program.

ESA CAM covers 100% of the cost of qualifying energy upgrades to common areas and central systems. This includes community and laundry rooms, outdoor recreation areas, parking lots, and central heating and cooling systems.

SUBMIT AN INTEREST FORM → ABOUT ESA → SIGN UP FOR THE NEWSLETTER →



Health and Safety During COVID-19

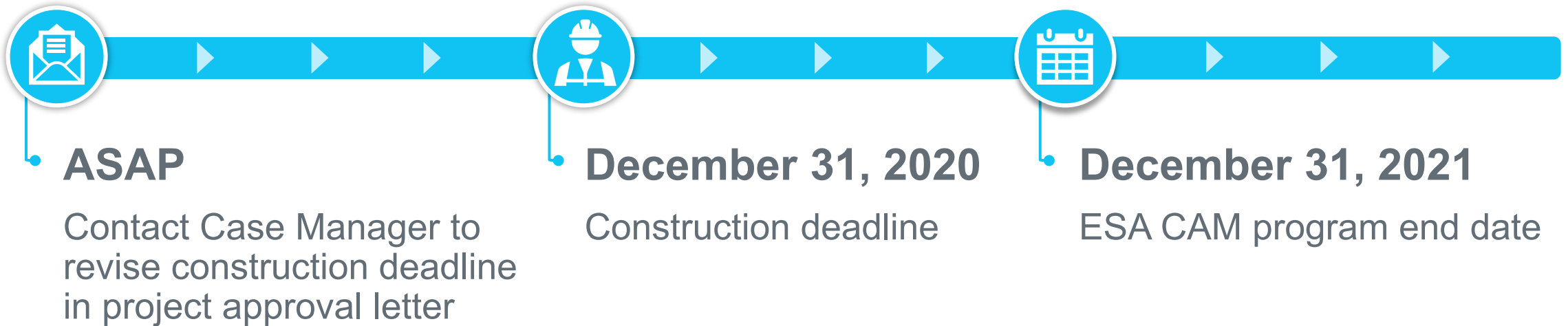
- Your health and safety remain our top priorities alongside maintaining your progress in the program
- Program participants will determine if on-site construction activities are allowable based on local and state reopening's and CDC COVID-19 safety precautions
- ESA CAM funding remains secure





Program Timeline

Projects with Project Approval Letter issued on or before March 1, 2020:



All projects must complete construction as set forth in their Project Approval Letter or the construction deadline, whichever comes first .



Program Timeline

Projects with Project Approval Letter issued on or after March 2, 2020:



All projects must complete construction as set forth in their Project Approval Letter or the construction deadline, whichever comes first .



Program Timeline

Projects without a Project Approval Letter:



All projects must complete construction as set forth in their Project Approval Letter or the construction deadline, whichever comes first .



Next Steps – Contact Case Manager

All projects with existing Project Approval Letters:

- Contact your ESA CAM Case Manager if your project requires an extension
- Once a revised deadline is approved, Case Managers will revise the construction deadline outlined in the Project Approval Letter

Construction Timeline

Milestone
Begin construction
Mid-construction meeting
Construction completion
Verification documents due
Verification inspection (if required)



Phased Payment Policy

Revised Threshold

The qualifying incentive threshold is reduced from **\$200,000 to \$100,000**

Incentive Payment

Projects can receive up to **33% of the total incentive reservation** at 50% of project completion (as reflected on the approved Project Timeline)

Requirements

Projects must receive written approval

Project must expend at least 50% of the incentive value and install at least 30% of core measures.

Core Measures



Comprehensive lighting scopes \geq \$20,000



DHW heaters and boilers



Heating and cooling systems*



Building envelope measures*



Example: Phased Payment Policy

Project must expend at least 50% of the incentive value and install at least 30% of core measures.

Measures must be fully installed and operational in order to receive payment

List of Core Measures

Comprehensive lighting scopes \geq \$20,000

DHW heaters and boilers

Heating and cooling systems

Project X Total Incentive: \$200,000

Phase 1: Complete by July 31, 2020

Phase 1 Incentive (33%): \$66,000

Measure	% Complete	Incentive Value Expended
Lighting	100%	\$50,000
2 of 4 DHW Boilers	50%	\$50,000
Total Spent		\$100,000

Phase 2: Complete by project completion

Phase 2 Incentive (67%): \$134,000

Measure	% Complete	Incentive Value Expended
Heating & Cooling System Upgrades	100%	\$50,000
2 of 4 DHW Boilers	50%	\$50,000
Total Spent		\$100,000



Change Order Policy

- Change Orders Without Cost Impact



For **changes to material or equipment specifications**, participants should notify their case manager and provide cut sheets for new equipment

- Change Orders With Cost Impact



For **changes to material or equipment quantity** – but no change to approved cost per unit* – participants should notify their case manager and provide updated bid with line-by-line quantity and total cost changes



For **changes to approved scopes of work or incentive reservations**, participants should notify their case manager in writing and provide updated bid line-by-line scope and cost changes and updated cut sheets

- Change orders will be reviewed on a case-by-case basis and approval depends on program funding availability.



Virtual Audits and Final Verifications

- In response to COVID-19, ESA CAM is now offering virtual audits (pre-construction) and verification inspections (post-construction)
- Audits will take place via a software platform compatible with mobile devices and will include a preliminary conversation with the ESA CAM staff representative to cover:
 - Safety
 - Best practices and techniques
 - What data they're looking for and the equipment/site components they'll need to inspect over the video



New Projects: Waitlist

- 2020 program enrollment is full, but property owners can complete an interest form to join the waitlist.
- Interested property owners should submit a project inquiry.
- Projects on the waitlist will be eligible for the 2020 if space becomes available and future program cycles.

SUBMIT AN INTEREST FORM

Please fill out this interest form to find out if your project is a good fit for PG&E's Energy Savings Assistance: Common Area Measures (ESA CAM) program.

Note: Southern California Gas, Southern California Edison, and San Diego Gas and Electric have a similar offering within their service territories. Contact the Single Point of Contact (SPOC) at multifamilySPOC@trccompanies.com for a referral.

Name (required)

Email (required)

Phone Number (required)

www.esacommonarea.com/contact



COVID-19 Resources

- ESA CAM Q2 2020 newsletter included COVID-19 resources (e.g., websites, webinars, etc.) for affordable housing properties
- Please send valuable resources to us at multifamilySPOC@TRCcompanies.com
- We will continue to share resources with ESA CAM participants



Questions

The screenshot shows a GoToWebinar window with the following elements:

- Window title: File View Help
- Attendee List: (2 | Max 1001)
- Audio section:
 - Audio Mode: Use Telephone, Use Mic & Speakers
 - Dial: 773-945-1010
 - Access Code: 407-254-450
 - Audio PIN: 97**
 - If you're already on the call, press #97# now.
- Questions chat box: A blue bar with a plus sign and the text "Questions" is highlighted with an orange border.
- Practice Webinar: Webinar ID: 239-044-248
- GoToWebinar™ logo at the bottom.

Type questions in the chat box



Thank You



www.esacommonarea.com



multifamilySPOC@TRCcompanies.com



1-866-352-7457